



ENGRAVING STATION

**M10 JEWEL**

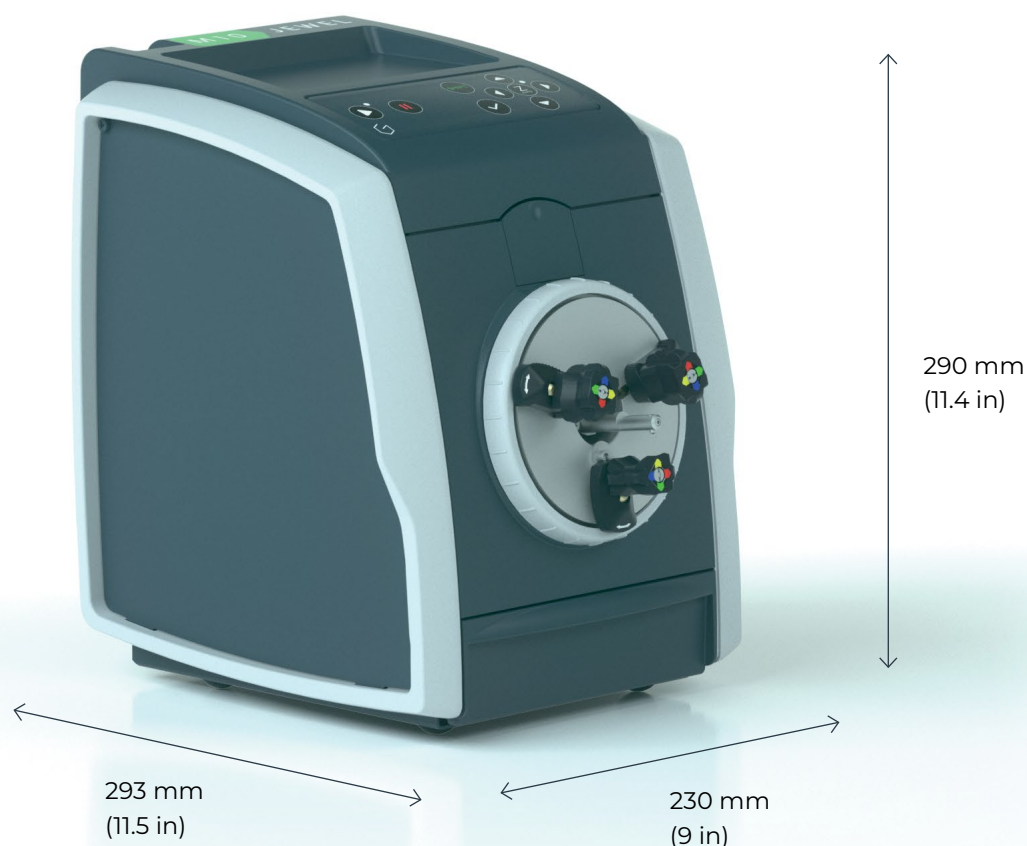


**GRAVOTECH**

by  **BRADY**



The M10 Jewel is a jewelry personalization machine. With a footprint of the size of an A4 sheet, this compact engraver is designed for internal and external ring and bangle engraving and required very little technical manipulation or maintenance.



### COMPACT ENGRAVING MACHINE

The M10 Jewel rotary engraving machine has a 230 x 293mm (9 x 11.5 in) footprint, enabling you to place it in small stores and workshops. Take it to Christmas markets, fairs or any event thanks to its lightweight of 6.5kg (14.33 lbs) - one of the lightest on the market! Drop your tools and jewels on the plate on the top of the machine, designed for maximum space optimization.

### INTERNAL AND EXTERNAL ENGRAVING

The M10 Jewel is fitted with 3 jaws around the moving diamond tip for internal and external ring and bracelet engraving. Choose between 4 positions to match the jewel diameter and shape. No technical manipulation is required when putting the ring or bracelet in the machine, simply clamp it by turning the clamping wheel!

### ERROR-FREE ENGRAVING PROCESS

Easily position texts, symbols and logos on your jewels with the ABC engraving software. Your composition is auto-centered and simulated on the software interface before the engraving starts, eliminating the risk of error. Integrate an item catalog with pre-saved engraving settings to save time and stress!

SEE OUR VIDEO



## KEY FEATURES

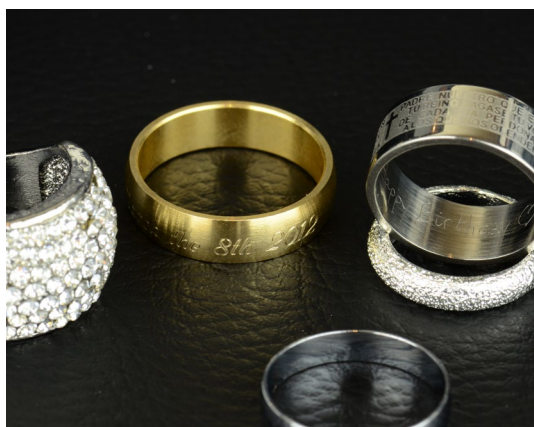


### Diamond tip

Diamond engraving is very quiet and does not cause any chipping as it scribes, and does not rotate like a spindle.

The diamond engraving tip automatically adjusts on the Z-axis for an exact and reliable engraving result.

Several tips are available.



### Personalize all precious metals

Rings and bracelets come in different materials and precious metals.

The M10 Jewel engraving machine allows you to engrave them all.

Personalize gold, silver, copper, brass, steel, wood, plastic, and more.



### Dedicace™ option

Let your customers add their personal touch on their rings and bangles with the Dedicace™ option.

This personalization engraving solution, patented by Gravotech, perfectly reproduces handwritten messages, signatures or drawings done on a specially designed tablet.

LEARN MORE ABOUT THE M10 JEWEL



## SOFTWARE

### BEGINNER



#### ABC

ABC software is the easiest engraving software for Gravotech laser and rotary machines.

Engrave in only 3 simple steps, from a computer or a tablet!

### EXPERT



#### Gravostyle™

One-of-a-kind piloting software for Gravotech laser and rotary engraving machines

## SERVICE & SUPPORT



#### Training

Our training modules are designed to optimize your use of our solutions and are available for our full range of machines, software and accessories.



#### Technical support

We bring you local support in your language in more than 50 countries, where we have established presence directly and with our distribution partners.



#### Maintenance

Thanks to experience gathered with Gravograph and Technifor and our global presence in more than 50 countries with 150 Gravotech technicians and our distributor partners, we can offer you a wide range of services.

APPLICATIONS



Personalizing and engraving jewelry



Personalizing and engraving jewelry



Personalizing and engraving jewelry



Personalizing and engraving jewelry

MATERIAL CHARACTERISTICS

Technology		DIAMOND DRAGGING	
Metal	Aluminum		■
	Brass		■
	Coated metal		■
	Copper		■
	Gold, silver, nickel, platinum		■
	Stainless steel		■
	Steel		■
	Titanium		■

■ = Marking/Etching

MAKE YOUR SAMPLES



# TECHNICAL DATA

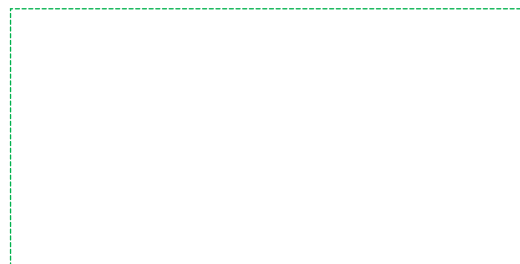
	M10 JEWEL
Technology	Scribing
Machine dimensions (L x W x H)	230 x 293 x 290 mm (9 x 11.5 x 11.4 in)
Machine weight	6,5 kg (14,3 lbs)
Object diameter	12.5 to 80 mm (0.5 x 3.15 in)
Max objects weight	1 kg (2.2 lbs)
Z axis auto	Yes
Noise	<60 dB
Operating temperature	min. +5°C (+ 41°F) - max. +40°C (+104 °F)
Connection to computer	USB / Bluetooth (option)
Maximum speed	5 mm/s (0.2 in/s)
Z stroke (Z travel)	10mm (0.39 in)
Tool diameter	3,17 mm (0,12 in)



[info.cn@gravotech.com](mailto:info.cn@gravotech.com)  
[+86 21 64886003](tel:+862164886003), [400-6757-530](tel:+86216757530)  
[www.en.gravotech.cn](http://www.en.gravotech.cn)

**GRAVOTECH (SHANGHAI) ENGRAVING  
EQUIPMENT CO.,LTD.**  
Building F, No. 1835 Duhui Road,  
Minhang District  
201108, Shanghai, China

Distributed by:



Follow us:



[gravotech.off](#)



[Gravotech Group](#)



[Gravotech](#)



[Gravotech - Gravograph](#)

Gravotech-M10 JEWEL-05-2025-en-CN. The information, photos and illustrations contained in this document are not binding and can be modified without notice.

This document is non contractual. Gravograph™, Gravotech™, Technifor™, WeLase™, Gravostyle™ and Dedicace™ are used, pending or registered trademarks of a Gravotech Group company.

©Gravotech Marking - 466 rue des Mercières - Z.I. Périca - 69140 Rillieux-la-Pape - France. Société par Actions Simplifiée with a share capital of 26 749 016 € - SIREN : 334 818 515 RCS Lyon.