



CNC STATION

IS400

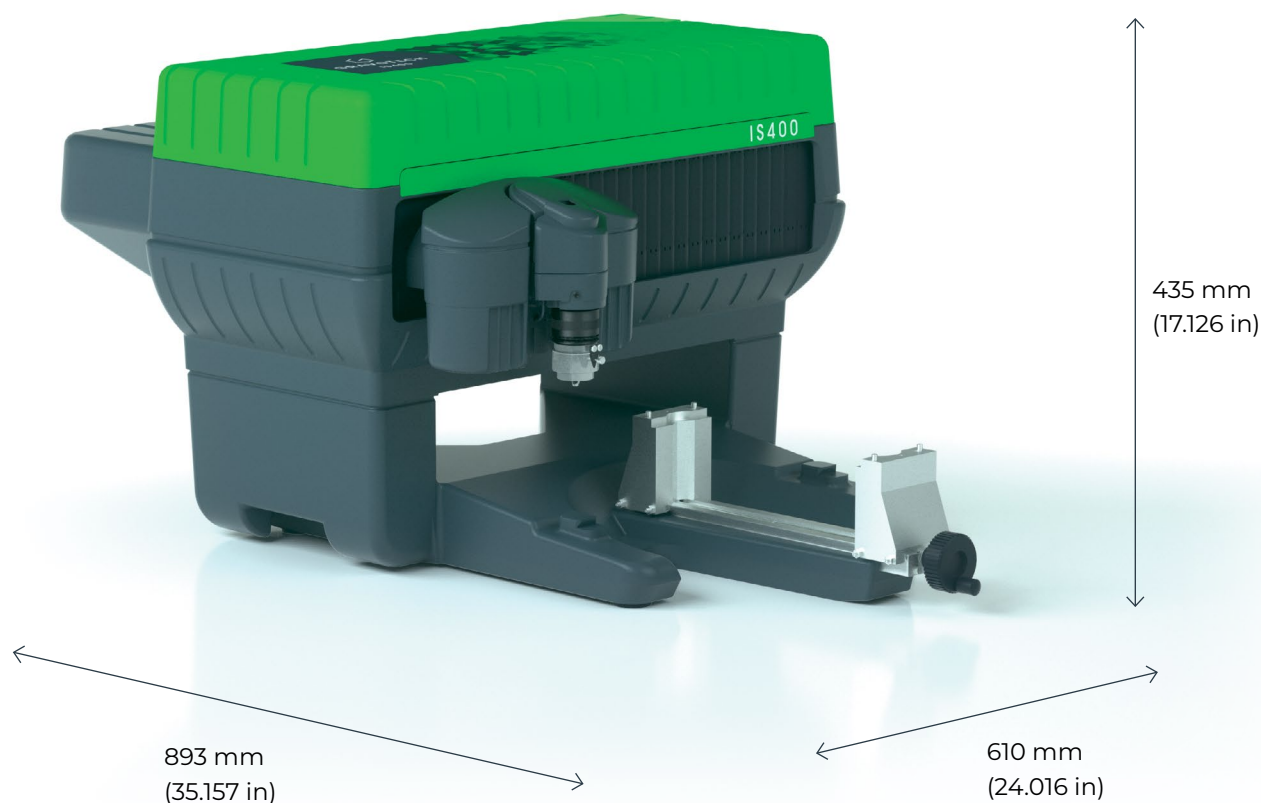


GRAVOTECH

by  **BRADY**



Unique in the market, this industrial engraver is perfect for signage, labelling, light milling and identification of parts. IS400 is a rotary engraving machine suited for medium size items and IS400 Volume for larger objects.



PRECISE ENGRAVING ON ALL MATERIALS

With key features such as point and shoot, high frequency spindle and our onboard software Gravostyle™, IS400 simplifies your workflow and ensures a consistent engraving on any surfaces, flat or non-flat without permanent supervision of the operator.

DURABILITY

These industrial engravers are a success thanks to their outstanding robustness, whichever the quantity of work they intake. With an adjustable rotation speed, IS400 and IS400 Volume are designed to meet the demanding marking and machining needs in the industry.

ENGRAVING MACHINE FOR METAL AND PLASTIC

IS400 can mark on all materials from the softest plastic such as PEHD to the very hardest metal like steel. You are sure to have excellent results your applications: drilling on metallic front panels, surface engraving for light signage or deep marking for plaques (interior and exterior).

SEE OUR VIDEO



KEY FEATURES

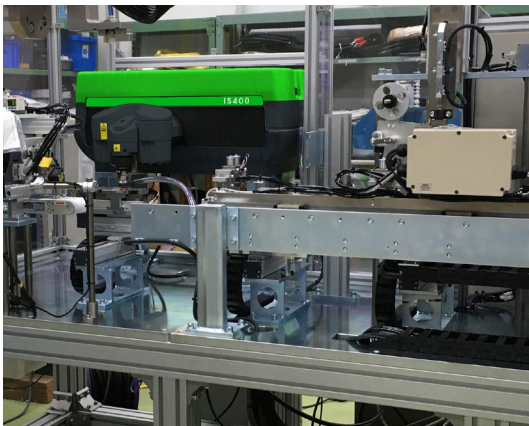


IS400 Volume

Unique to the market, the IS400 Volume opens new possibilities. It has the biggest stroke available in the industry.

It is equipped with a motorized fixing system that allows the passage from flat engraving to cylinder engraving (optional cylinder turner) without adjusting.

Mainly used in any industry with bulky parts such as funeral urns, aeronautical landing gear, and automotive engine blocks.



IS400 – Standard Or Integrable

With more than 10,000 units sold, the IS400 is a stable, safe choice, versatile, CNC engraving machine.

Since the nineties, most of the IS400s sold are still running in all types of industries, which proves its reliability and durability.

The IS400 can also be split from its base so it can be attached to a customized support.

You are free to define your own engraving axis, tilt angle, automation to work at competitive cost on rail or aviation components, wind turbine blades, etc.



Optimized Accessories

The IS400 is designed to optimize your workflow:

- automatic plate feeder for mass production
- ability to switch from cylindrical objects to flat engraving in less than 30 seconds,
- large choice of engraving tools (Diamond, Twincut, Onecut, Percut),
 - range of jigs for all shapes of objects and
- ability to use your own tools.

LEARN MORE ABOUT THE IS400



SOFTWARE

GRAVOSTYLE™



Expert software made by engravers for engravers

Gravostyle™ is a professional engraving and cutting software that puts Gravotech engraving expertise in reach. Benefit from advanced possibilities and save time! Unique features available: Braille, Photostyle, Print & Cut, and more.

Complete engraving process mastered

Due to our history of making engraving machines, we have a full understanding of the engraving process. Gravostyle™ is fully compatible with all of our technologies. The software/machine interaction streamlines and improves your day-to-day engravings with functions like Point & Shoot.

Gravostyle™: unique software for laser and rotary

Are you already using Gravostyle™ on your rotary machine, and expanding your business with a laser? No need to learn how to use another software, switch in one click on the Gravostyle™ interface to set-up laser engraving!

SERVICE & SUPPORT



Training

Our training modules are designed to optimize your use of our solutions and are available for our full range of machines, software and accessories.



Technical Support

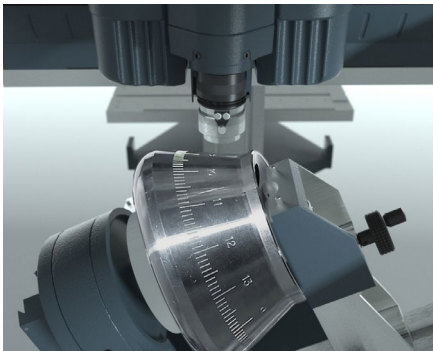
We bring you local support in your language in more than 50 countries, where we have established presence directly and with our distribution partners.



Maintenance

Thanks to experience gathered with Gravograph and Technifor and our global presence in more than 50 countries with 150 Gravotech technicians and our distributor partners, we can offer you a wide range of services.

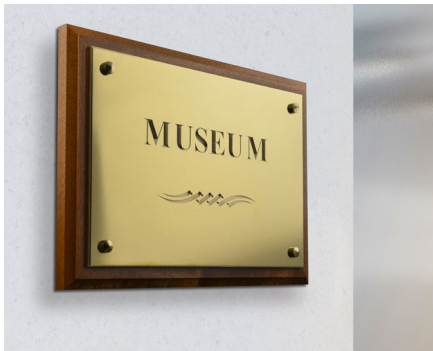
APPLICATIONS



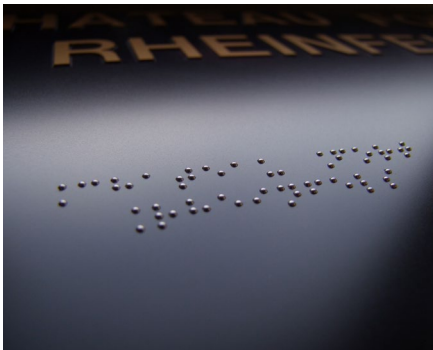
Large part marking & traceability



Gifts & personalization



Professional and institutional plates



Braille ADA



Sign engraving



Fine metal cutting

MATERIAL CHARACTERISTICS

		ROTARY	DIAMOND DRAGGING
Materials	Glass, Crystal	◼	
	Leather	◄◄ ◻	
	Wood, varnished wood	◄◄ ◻	
	Acrylic, PMMA	◄◄ ◻	
	Plastics	◄◄ ◻	
	Anodized aluminum	◄◄ ◻	◼
	Brass	◄◄ ◻	◼
	Gold, silver, nickel, platinum	◄◄ ◻	◼
	Metals	◻	◼

◄◄ = cutting ◻ = engraving/deep marking ◼ = marking/etching

MAKE YOUR SAMPLES



TECHNICAL DATA

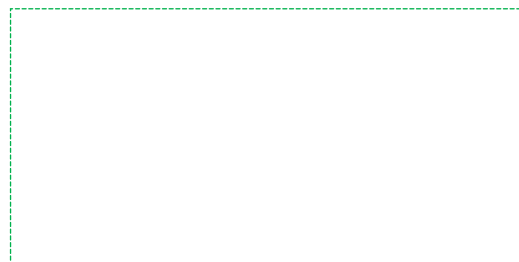
	IS400	IS400 VOLUME
Technology	Rotary, scribing	
Marking area max (L x W)	305 x 210 mm (12 x 8 in)	
Spindle power	90W (Optional spindle : 150 W)	
Max objects size (L x W)	Unlimited x 230 mm (9 in)	Unlimited x 230 mm (9 in)
Max object height (H)	105 mm (4.13 in)	400 mm (15.75 in)
Max objects weight	20Kg - 44 lbs	
Machine dimensions (L x W x H)	893 x 610 x 435 mm (35 x 24 x 17 in)	900 x 615 x 840 mm (35.4 x 24.2 x 33 in)
Machine weight	42Kg (92,6 lbs)	90 Kg (148,4 lbs)
Type of spindle	Top load spindle or collet spindle	
Noise	80 dB (A) +/- 2	
Point & shoot	yes	
Operating temperature	5 °C (41 °F) - 40 °C (104 °F)	
Connection to computer	USB	
Maximum speed	25 mm/s (0,98 in/s)	
Z stroke (Z travel)	40 mm (1,57 in)	
Rotation speed	max 20 000 rpm	
Tool diameter	4,36 mm (0,17 in) with optional spindle : 3 mm (0,12 in) to 6,36 mm (0,25 in)	



info.cn@gravotech.com
 +86 21 64886003, 400-6757-530
www.en.gravotech.cn

**GRAVOTECH (SHANGHAI) ENGRAVING
EQUIPMENT CO.,LTD.**
 Building F, No. 1835 Duhui Road,
 Minhang District
 201108, Shanghai, China

Distributed by:



Follow us:



gravotech.off



Gravotech Group



Gravotech



Gravotech - Gravograph

Gravotech-IS400-05-2025-en-CN The information, photos and illustrations contained in this document are not binding and can be modified without notice.

This document is non contractual. Gravograph™, Gravotech™, TechniFor™, WeLase™, Gravostyle™ and Dedicace™ are used, pending or registered trademarks of a Gravotech Group company.

©Gravotech Marking - 466 rue des Mercières - Z.I. Périca - 69140 Rillieux-la-Pape - France. Société par Actions Simplifiée with a share capital of 26 749 016 € - SIREN : 334 818 515 RCS Lyon.