



LASER STATION

**WELASE™**



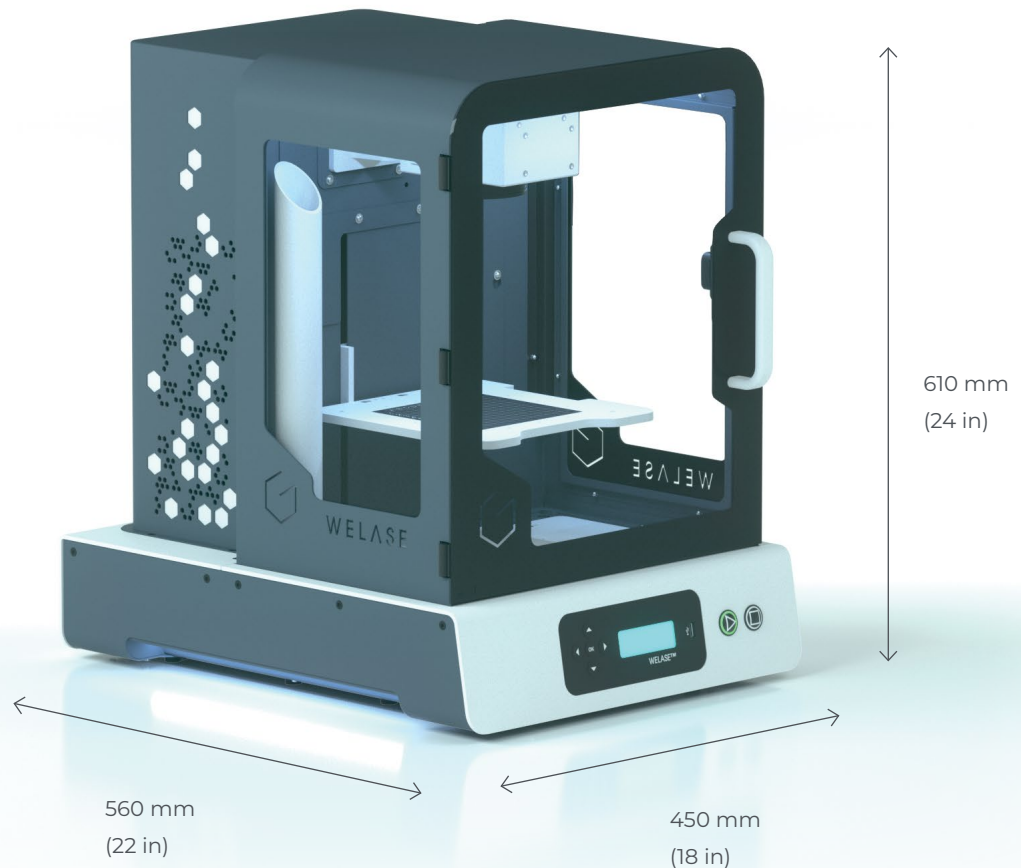
**GRAVOTECH**

by  **BRADY**



LASER STATION  
WELASE™

Introducing the magic of laser engraving to your business. The WeLase achieves personalization of the highest quality in a matter of seconds and raise your customers curiosity.



### DESIGNED FOR RETAIL

Compact, sleek and quiet, with large viewing windows, this personalization machine creates a unique in-store experience, giving customers something to cherish and a moment to remember. Meeting the most stringent world safety regulations, WeLase is a certified Class 1 system designed for use in retail environments.

### HIGH-END TECHNOLOGY MADE SIMPLE

Benefit from our cutting-edge technology in an easy to use laser which works without needing to know about its galvanometric high-speed marking head, automatic vertical axis, positioning assistants, easy fix vices, smart vision, and different custom software from “no training required” to “expert”. The WeLase can also be used in workshops, able to interface with web servers and ERP systems to deliver high volume online sales of uniquely personalized items.

### CUSTOM LASER ENGRAVING

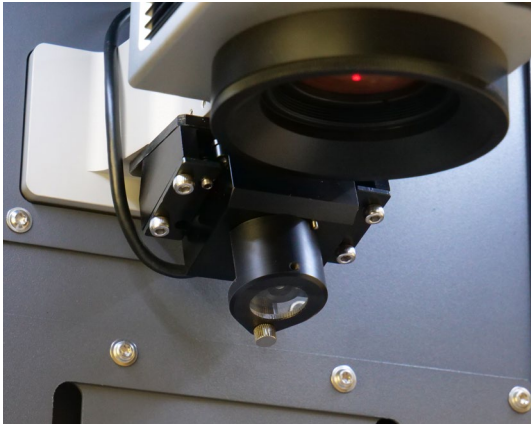
WeLase is available in Fiber, CO2, Hybrid, or Green laser sources to get the best results on the material of your choice. With many accessories, options, and specialized packages, we have the solution for your items, e.g. engraving inside rings, ornaments, glass, flasks, cutting metallic shapes, leather bracelets, and many other possibilities.

SEE OUR VIDEO



Small laser engraver station for  
in-store and on-line personalization

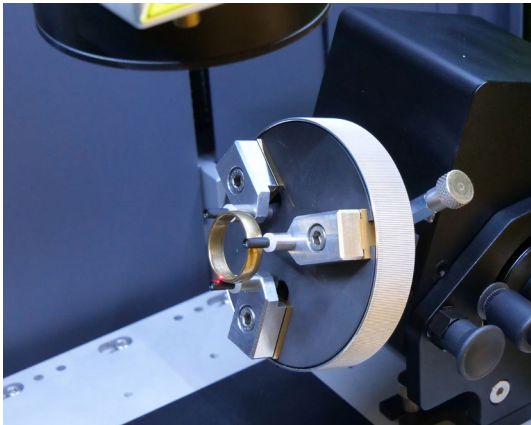
## ACCESSORIES



### G-Eye

The camera G-Eye is the perfect assistant to create unique design on any flat surface (pendants, flat bracelets, pens...).

- Preview of the engraving area on your computer or tablet.
- Quick positioning of the engraving on your product, engraving mistakes are avoided.
- Easy design on complex and irregular shapes.



### Pack Jewel

WeLase becomes the perfect jewelry laser engraving machine.

- Interior and exterior engraving of rings and bracelets, and flat item thin cutting.
- Precise positioning of jewelry.
- Contrast result, white marking, or deep engraving.



### Pack Easy Fix

The machine to make personalized items.

- Precise and fixed repeatable positioning.
- Versatile: from a pen to a bottle with the same clamp.
- Secure your object easily with the magnet system.
- No clamping, no chucks, instant item positioning.

### Pack Safe Air

Compact exhaust for all environments

- Exhaust the fumes and particulates to keep the machine clean and accurate.
- Filters fumes and odours to create a safe and clean environment
- Integrates easily with the WeLase.
- More silent than the other exhausts on the market and ideal for a retail space.
- Exhaust filters are HEPA certified.



LEARN MORE ABOUT THE WELASE™



# SOFTWARE

NOVICE



## Catalog

Do you have a limited range of products to engrave? ABC Catalog is the right choice for you!

Contact us for a customized ABC Catalog version, integrating your own range of products.

BEGINNER

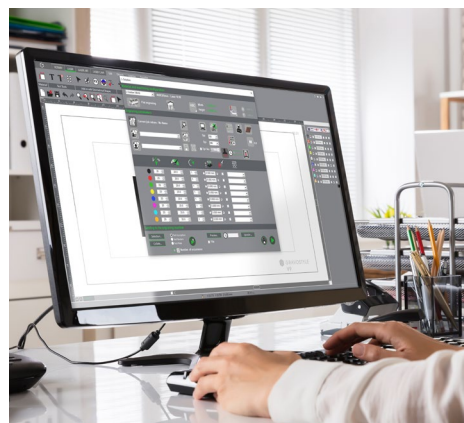


## ABC

ABC software is the easiest engraving software for Gravotech laser and rotary machines.

Engrave in only 3 simple steps, from a computer or a tablet!

EXPERT



## Gravostyle™

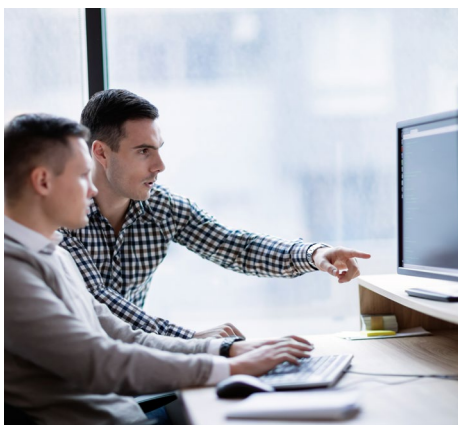
One-of-a-kind piloting software for Gravotech laser and rotary engraving machines.

# SERVICE & SUPPORT



## Training

Our training modules are designed to optimize your use of our solutions and are available for our full range of machines, software and accessories.



## Technical Support

We bring you local support in your language in more than 50 countries, where we have established presence directly and with our distribution partners.



## Maintenance

Thanks to experience gathered with Gravograph and Technifor and our global presence in more than 50 countries with 150 Gravotech technicians and our distributor partners, we can offer you a wide range of services.

# APPLICATIONS



Traceability of industrial parts



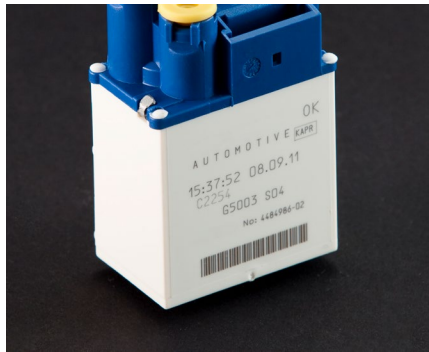
Cutting & engraving



Marking tools for identification and equipment traceability



Cosmetics & luxury



Automotive marking



Gifts & personalization

# MATERIAL CHARACTERISTICS

| Technology |                        | CO2  | FIBER | GREEN | HYBRID |
|------------|------------------------|------|-------|-------|--------|
| Materials  | Metals                 |      | ◀◻▶▶  | ▶     | ▶      |
|            | Plastics               | ▶▶   | ▶     | ▶     | ▶      |
|            | Glass, Crystal         | ▶    |       |       |        |
|            | Wood, varnished wood   | ▶◻▶▶ |       | ▶     |        |
|            | Leather                | ▶    |       | ▶     |        |
|            | Textiles               | ▶    |       |       |        |
|            | Paper, cardboard, cork | ▶▶   |       |       |        |
|            | Engraving materials    | ▶◻▶▶ | ▶◻▶▶  | ▶◻▶▶  | ▶◻▶▶   |

▶ = Cutting    ◻ = Engraving / Deep Marking    ▶ = Marking / Etching

MAKE YOUR SAMPLES



# TECHNICAL DATA

| Technology                            | CO2   | FIBER   | GREEN   | HYBRID  |
|---------------------------------------|---|---|---|---|
|                                       |  |  |  |  |
| <b>Laser Technology</b>               | CO2   | Fiber   | Green (DPSS)  | Hybrid (DPSS)   |
| <b>Machine dimensions (L x W x H)</b> | 450 x 560 x 610 mm (18 x 22 x 24 in)  |   |   |   |
| <b>Weight</b>                         | 44Kg (97 lbs)   | 42Kg (92.6 lbs)   | 39Kg (86 lbs)   | 39Kg (86 lbs)   |
| <b>Engraving area</b>                 | 100 x 100 mm<br>(4 x 4 in)  | 110 x 110 mm (4.33 x 4.33 in)   |   |   |
| <b>Max object size (L x W x H)</b>    | 340 x 200 x 180 mm<br>(13.4 x 8 x 7 in)   | 340 x 200 x 100 mm<br>(13.4 x 8 x 4 in)   |   |   |
| <b>Door Type</b>                      | Manual  |   |   |   |
| <b>Laser Safety Classification</b>    | Class 1 Door Closed/ Class 2M Door Open (Aiming Diode)                            |   |   |   |
| <b>Wavelength</b>                     | 10600nm   | 1064nm  | 532nm   | 1064nm  |
| <b>Laser Power</b>                    | 30W   | 20W / 30W   | 5W  | 10W   |
| <b>Communication</b>                  | Ethernet, USB and Wifi  |   |   |   |
| <b>Power Supply</b>                   | 100/240V AC - 50/60Hz   |   |   |   |



[contact@gravotech.com](mailto:contact@gravotech.com)  
 +33 (0) 4 78 55 85 50  
[www.gravotech.com](http://www.gravotech.com)

**GRAVOTECH MARKING**  
 466 rue des Mercières - Z.I. Périca  
 69140 Rillieux-la-Pape  
 France

Distributed by:



Follow us:



gravotech.off



Gravotech Group



Gravotech



Gravotech - Gravograph